



Cyclope Internet Filtering Proxy

- Installation Guide -

**Cyclope-Series
- 2010 -**

Table of contents

1. Overview	- 3
-	
2. Installation	- 4
-	
2.1. System requirements	- 4 -
2.2. Cyclope Internet Filtering Proxy Installation	- 4 -
2.3. Client Browser Configuration	- 7 -
2.3.1. Internet Explorer	- 8 -
2.3.2. Mozilla Firefox	- 9 -
2.3.3. Opera	- 10 -
2.4. Client Installation	- 11 -
3. Support	- 18
-	

1. Overview

Cyclope Internet Filtering Proxy monitors the entire Internet traffic and blocks the access to websites and files according to the chosen filter. The requested web pages are displayed only if they comply with the specified filters.

Cyclope Internet Filtering Proxy comes to help companies better manage Internet usage and bandwidth consumption, reduce web browsing for personal use during working hours, eliminate explicit content websites from being accessed, protect the network against online threats, and discourage the download of unlicensed software and other copyrighted materials.

Cyclope Internet Filtering Proxy monitors the entire Internet traffic and blocks the access to websites and files according to the chosen filter. The requested web pages are displayed only if they comply with the specified filters.

Cyclope Internet Filtering Proxy is also an Internet Sharing Software, capable of providing cost effective Internet access to multiple computers via a single Internet connection.

2. Installation

2.1. System requirements

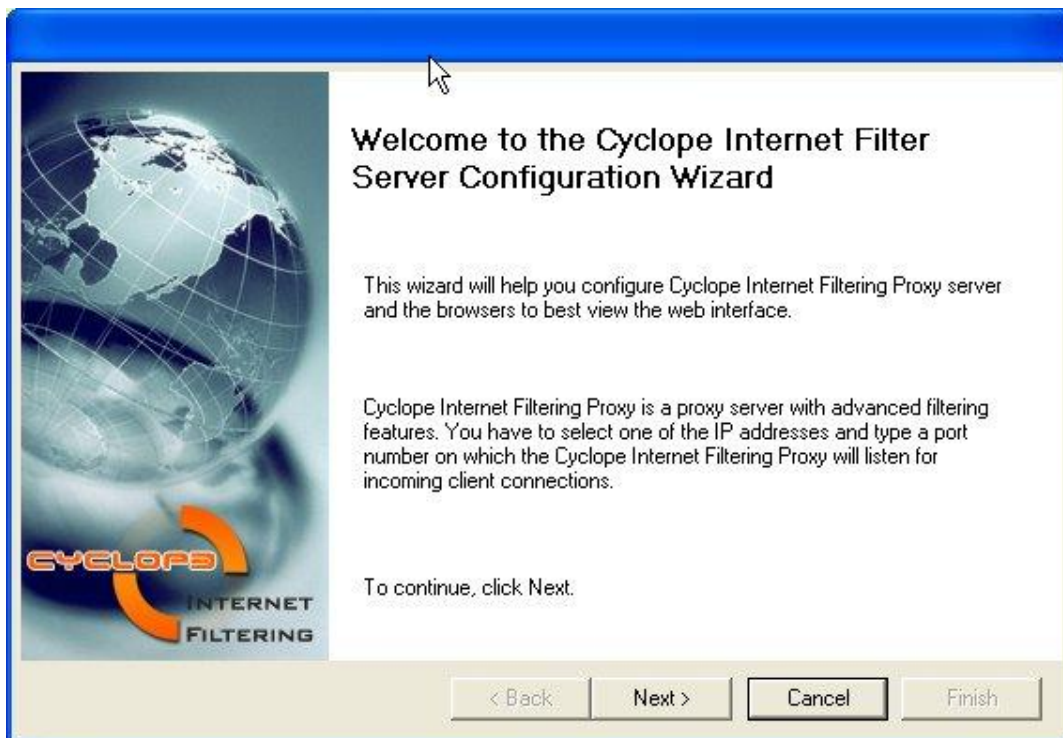
Windows NT, 2000, 2003, XP
256 MB RAM
4 MB on Hard Disk for application files
50MB additional storage space for log files.

2.2. Cyclope Internet Filtering Proxy Installation

In the setup please choose the installation folder where you want the program to be installed (the default folder is **Program files\CIFP**)

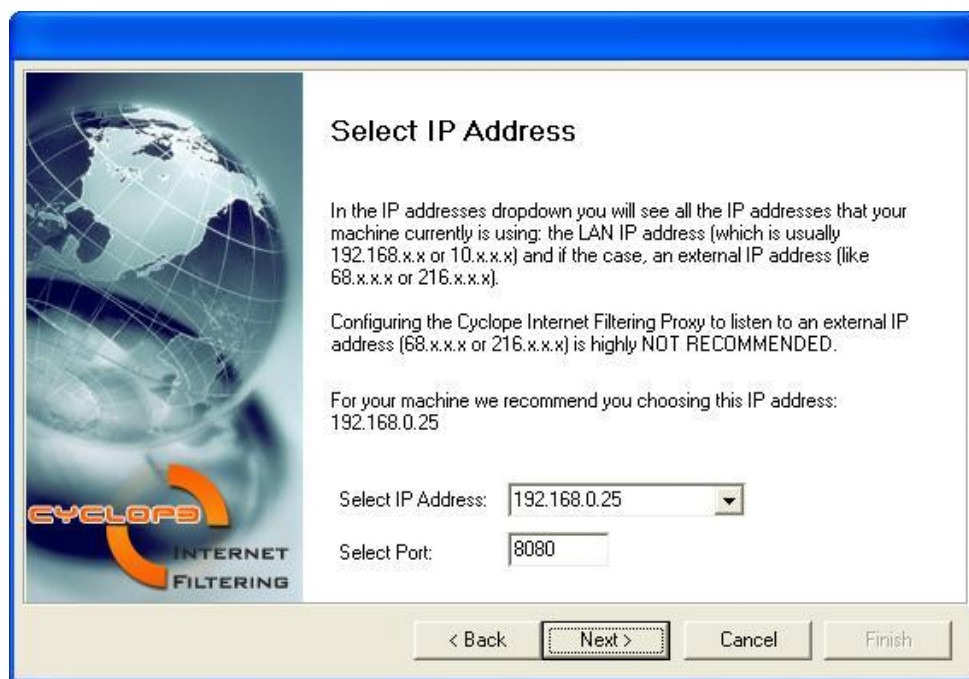
After install you have to configure **Cyclope Internet Filtering Proxy**. This is possible by running the **Configuration Wizard** that will open as soon as the installation wizard is finished.

Run **Cyclope Internet Filtering Proxy IP Address Wizard**. This wizard will start automatically before finishing the installation wizard.



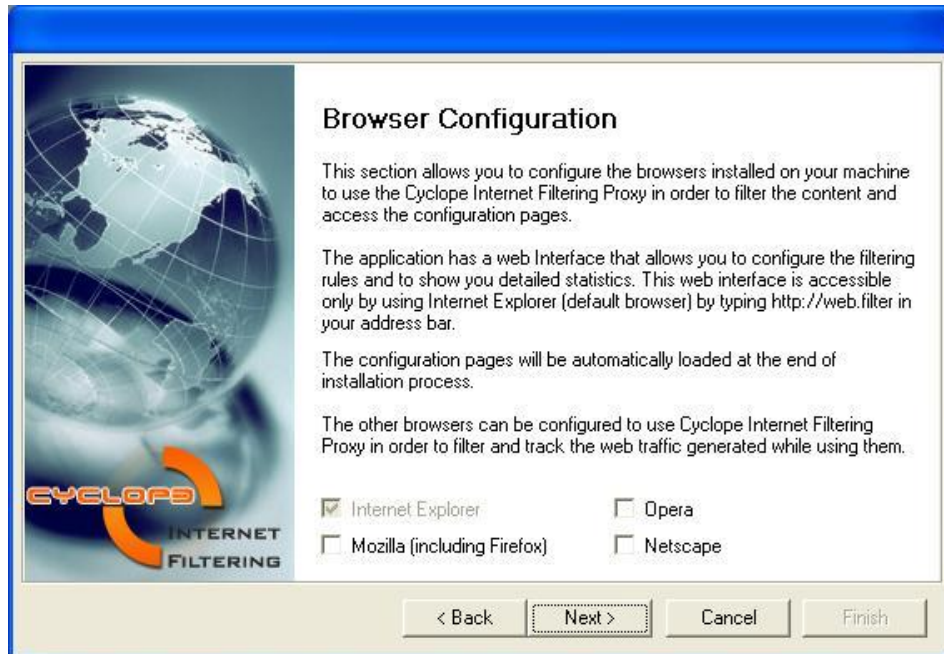
Select the IP Address

Cyclope Internet Filtering Proxy is a proxy server with advanced filtering features. You have to select one of the IP addresses and type a port number on which the **Cyclope Internet Filtering Proxy** will listen for incoming client connections. In the IP addresses dropdown you will see all the IP addresses that your machine currently is using: the **LAN IP address** (which is usually **192.168.x.x** or **10.x.x.x**), the **Default IP address** (127.0.0.1) and if the case, an **External IP address** (like **68.x.x.x** or **216.x.x.x**). If you select the **LAN IP address** (which is usually **192.168.x.x** or **10.x.x.x**) the traffic from all your LAN machines can be filtered. We recommend you to use this IP address. If you select the **Default IP address** (127.0.0.1) only the traffic from your machine will be filtered. This is recommended when you test the product on a single machine. Configuring the **Cyclope Internet Filtering Proxy** to listen to an **External IP address** (like **68.x.x.x** or **216.x.x.x**) is highly not recommended.



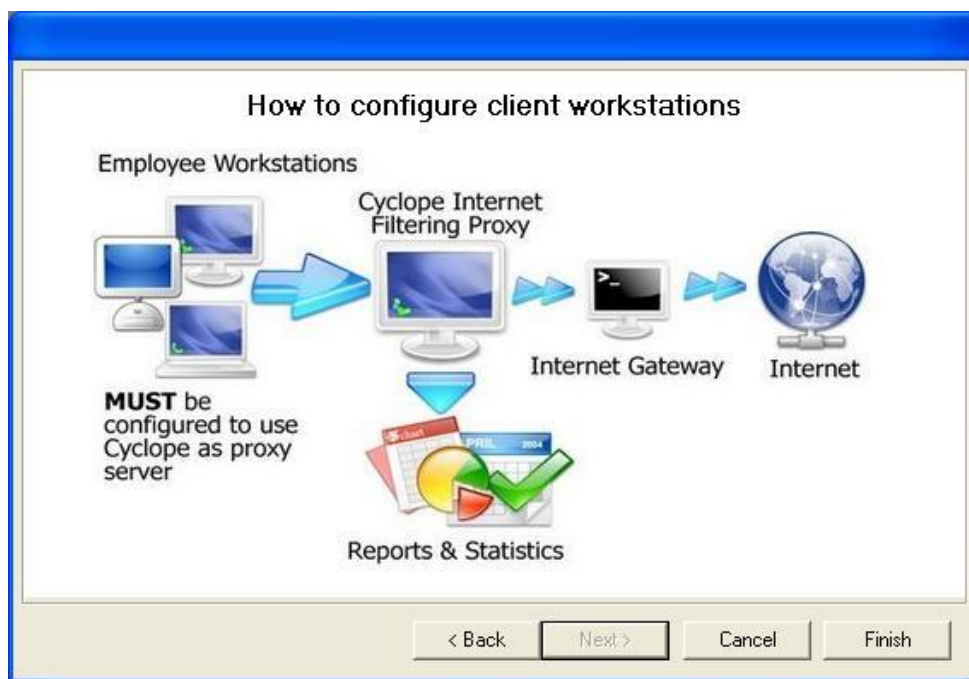
Browser Configuration

This section allows you to configure the browsers installed on your machine to use the **Cyclope Internet Filtering Proxy** in order to filter the content and access the configuration pages. **Cyclope Internet Filtering Proxy** has a web Interface that allows you to configure the filtering rules and to show you detailed statistics. The configuration pages will be automatically loaded at the end of installation process. The other browsers can be configured to use **Cyclope Internet Filtering Proxy** in order to filter and track the web traffic generated while using them.

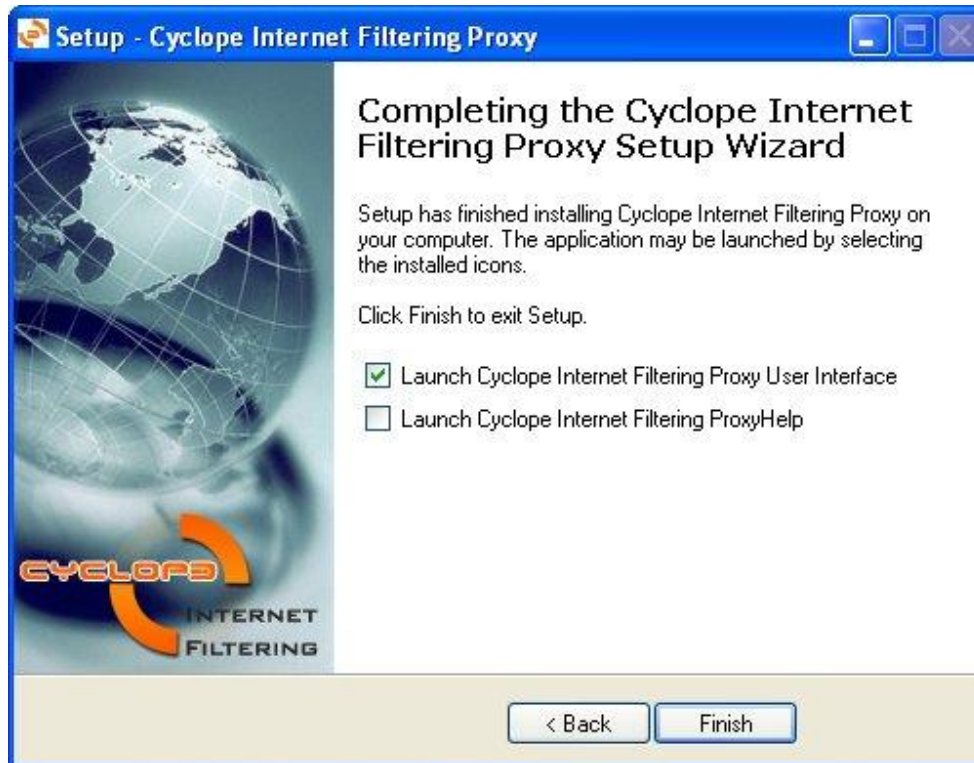


Client Configuration

In order to control and filter the Internet traffic made by work stations, you must configure the installed browsers to use a proxy server running on the chosen LAN IP, and chosen port.



For manually configuring your browser so that the application performs successfully please follow the paths below. After the wizard is completed, **Cyclope internet Filtering Proxy** web interface will open in a new browser.



2.3. Client Browser Configuration

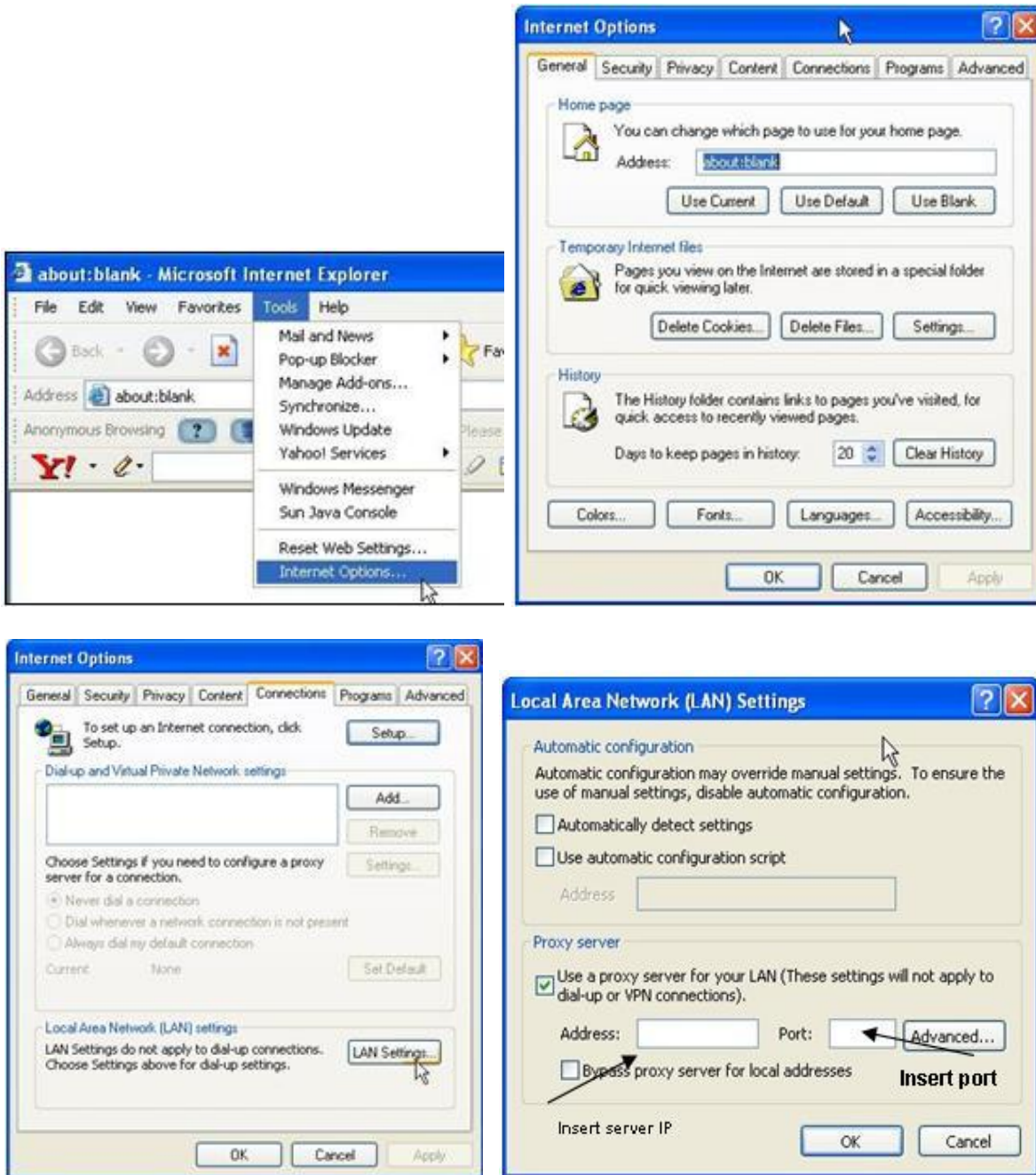
For monitoring all computers, it is compulsory that all traffic is routed through the same proxy. All network members will be asked to make some changes to the browsers they are using. This can be done manually following the instructions detailed below, or by using the **Client Configuration Utility** from the **Cyclope Internet Filtering Proxy** package. Before proceeding to the manual client browser configuration make sure that you know:

- **The server IP** (the computer where the application is installed)
- **The port** to be used. The default application port is: 8080.

If used in network please use the configuration utility to configure the proxy to listen for connections from the network IP address of the computer where **Cyclope Internet Filtering Proxy** is installed, then set all internet browsers from the computer clients that are using **Cyclope Internet Filtering Proxy** to access the Internet via a proxy connection and the proxy address is the address of the computer where the proxy is installed.

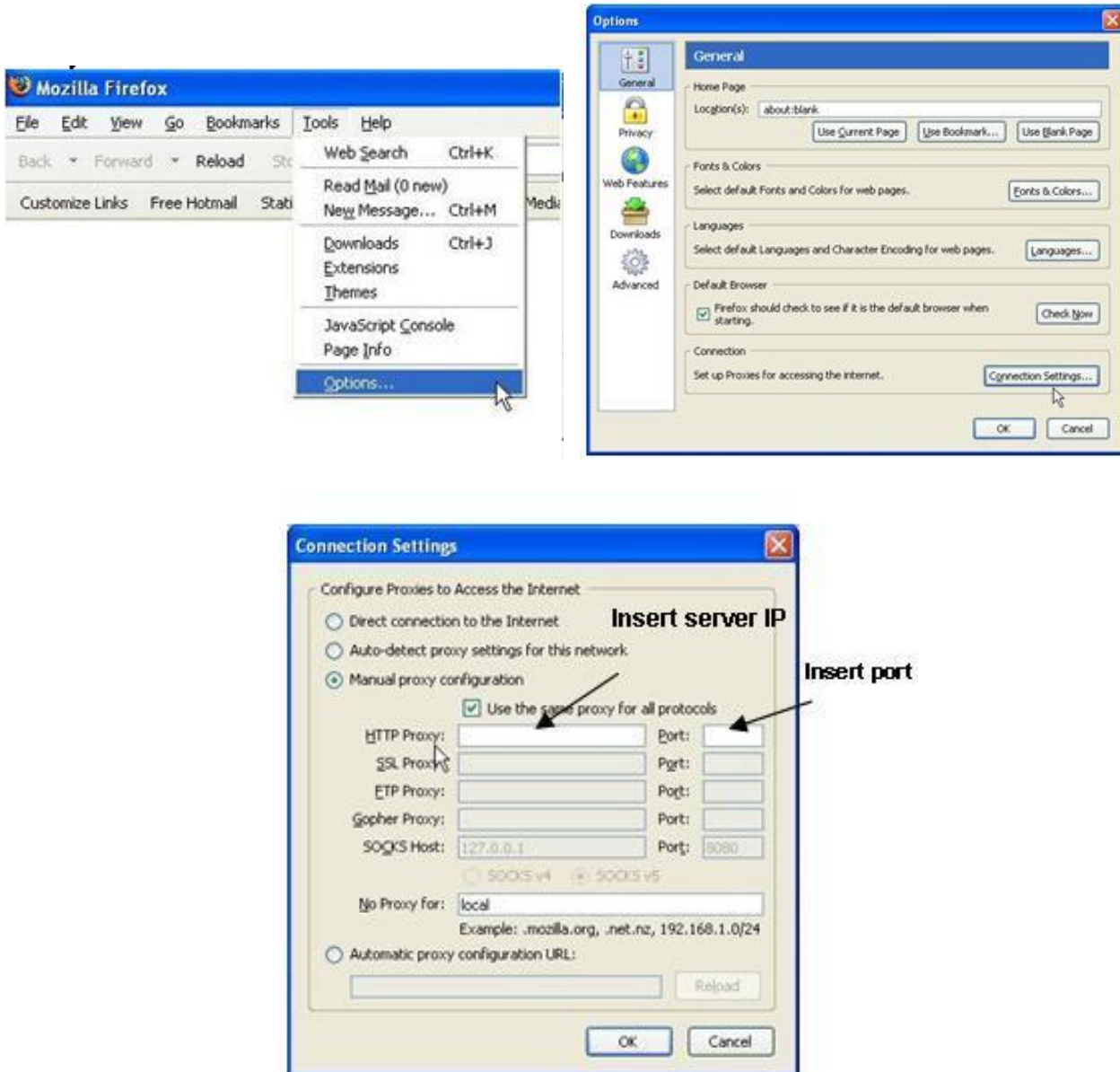
2.3.1. Internet Explorer

Go to **Tools / Internet Options / Connections / LAN Settings / Use a proxy server for your LAN / Address** - insert server IP (the computer where **Cyclope Internet Filtering Proxy** is installed), **Port** - insert the port.



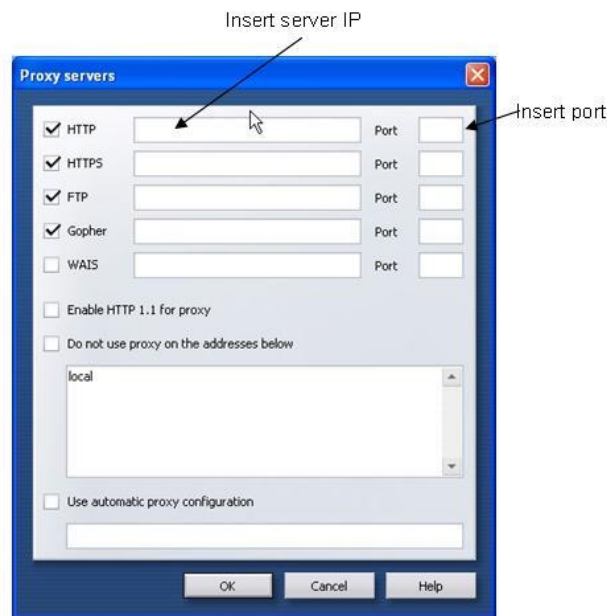
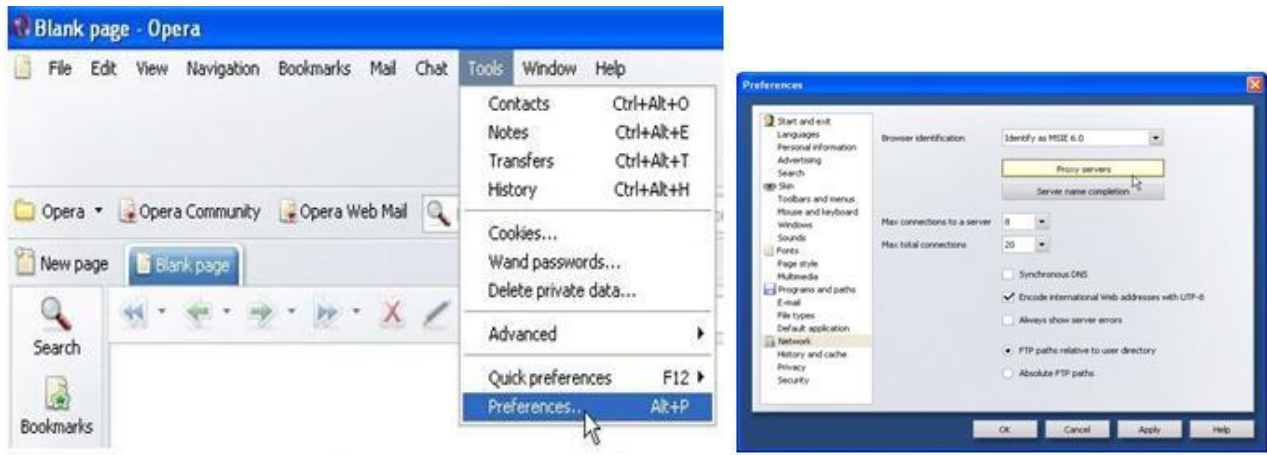
2.3.2. Mozilla Firefox

Go to **Tools/Options / Advanced / Network / Connection / Settings / Manual Proxy Configuration / HTTP proxy** - insert server IP (the computer where **Cyclope Internet Filtering Proxy** is installed), **Port** - insert the port.



2.3.3. Opera

Go to **Tools / Preferences / Advanced / Network / Proxy Server / HTTP** - insert server IP (the computer where **Cyclope Internet Filtering Proxy** is installed), **Port** - insert the port.



2.4. Client Installation

The client applications are located in the **[Installation_Folder]\Clients** folder and must be installed on each computer that is to be monitored.

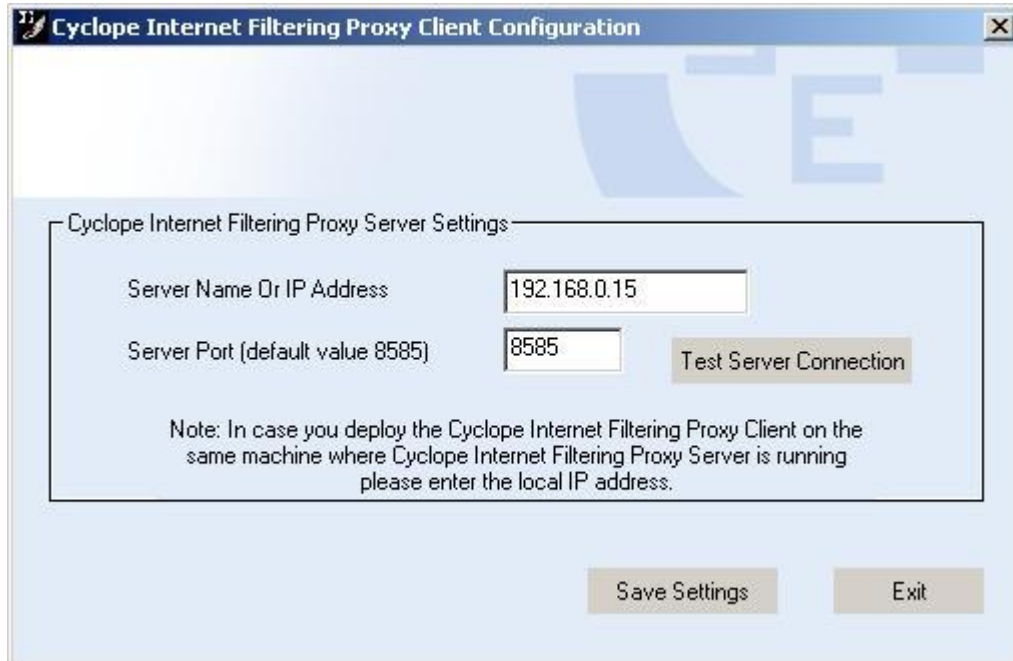
- **CIFPClientManual.exe** - invisible in Task Manager, recommended to be installed on computer running on **Windows 2000, Windows XP, Windows Server 2003, Windows Vista, Windows Server 2008, Windows 7** operating systems (the **Windows 98** and **Windows ME** machines cannot be monitored).
- **CIFPClientAutomatic.exe** - invisible in Task Manager, recommended to be installed on computer running on **Windows 2000, Windows XP, Windows Server 2003, Windows Vista, Windows Server 2008, Windows 7** operating systems (the **Windows 98** and **Windows ME** machines cannot be monitored) providing automatic traffic redirection features.
- **CIFPNetClient.dll** - this application should be installed in networks using **GPO** (**Group Policy Object**)

Cyclope Internet Filtering Proxy Client Installation

Run the chosen client version setup.



At the end of the application installation, the following dialog box will appear, allowing the **Cyclope Internet Filtering Proxy Client Configuration**



Cyclope Internet Filtering Proxy Client Configuration

Cyclope Internet Filtering Proxy Server Settings

Server Name Or IP Address

Server Port (default value 8585)

Note: In case you deploy the Cyclope Internet Filtering Proxy Client on the same machine where Cyclope Internet Filtering Proxy Server is running please enter the local IP address.

Information needed to be filled in is **the name of the server or the IP address of the server on which Cyclope Internet Filtering Proxy Server is installed** and the **server port (default value is 8585)**. Test if the client can connect to the server by pressing **Test Server Connection** button. It is recommended to test the connection before proceeding to the next client.



Cyclope Internet Filtering Proxy Net Client Installation

In case you chose to use the **CyclopeNETHidden.dll**, the clients designed for **Active Directory**, make sure that the following set of parameters required for use with the **Cyclope Internet Filtering Proxy Net Client** is configured.

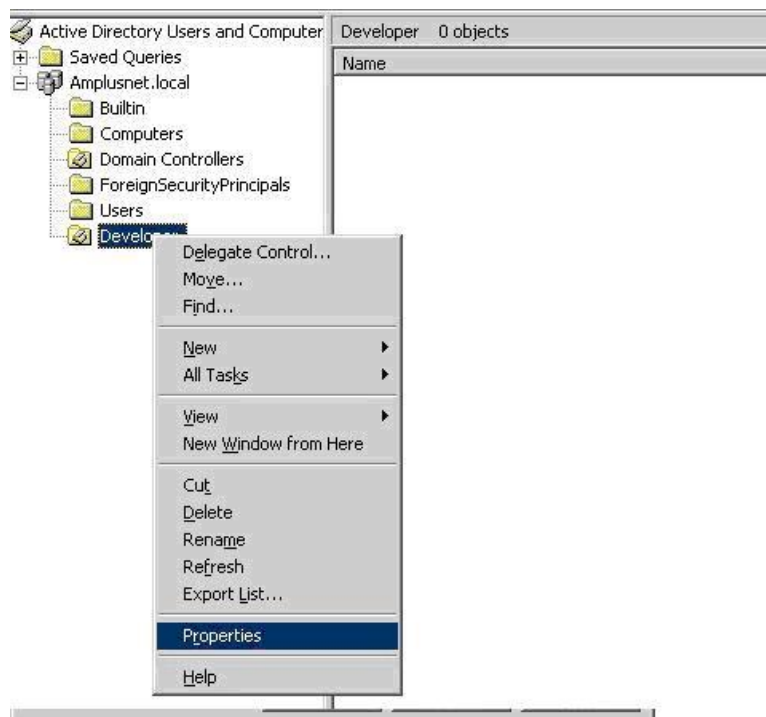
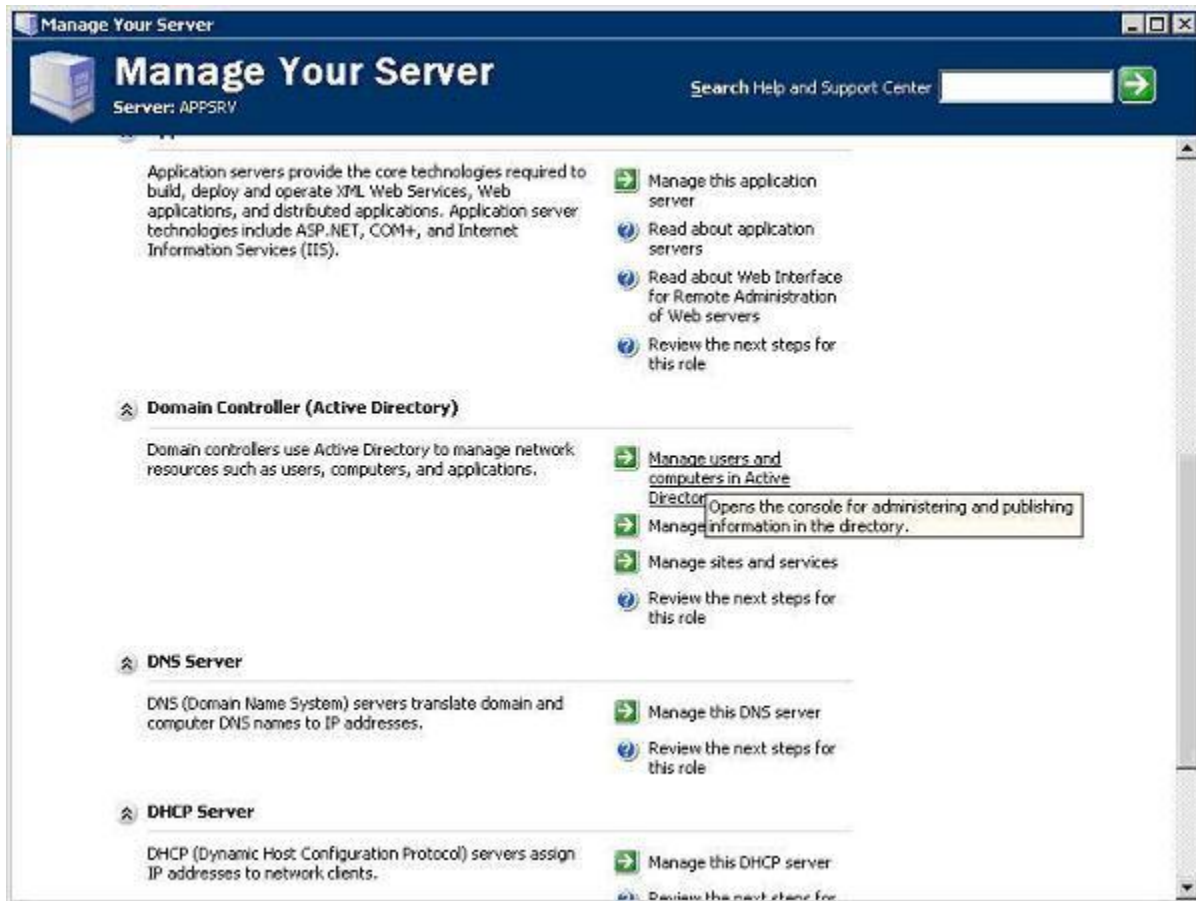
These parameters are:

"-cfg=[srv=CYLOPE_SERVER&srvport=CYLOPE_SERVER_PORT]"

The parameters are identical with the one used by **Cyclope Internet Filtering Proxy Client**.

The **Cyclope Internet Filtering Proxy Net Client** may be started each time a user logs on, by using a **GPO** (**Group Policy Object**). To create this:

1. A **GPO** has to be linked to an **OU** (**Organizational Unit**).
 - In **Active Directory / Users and Computers**, right click the **OU** and select **Properties**.

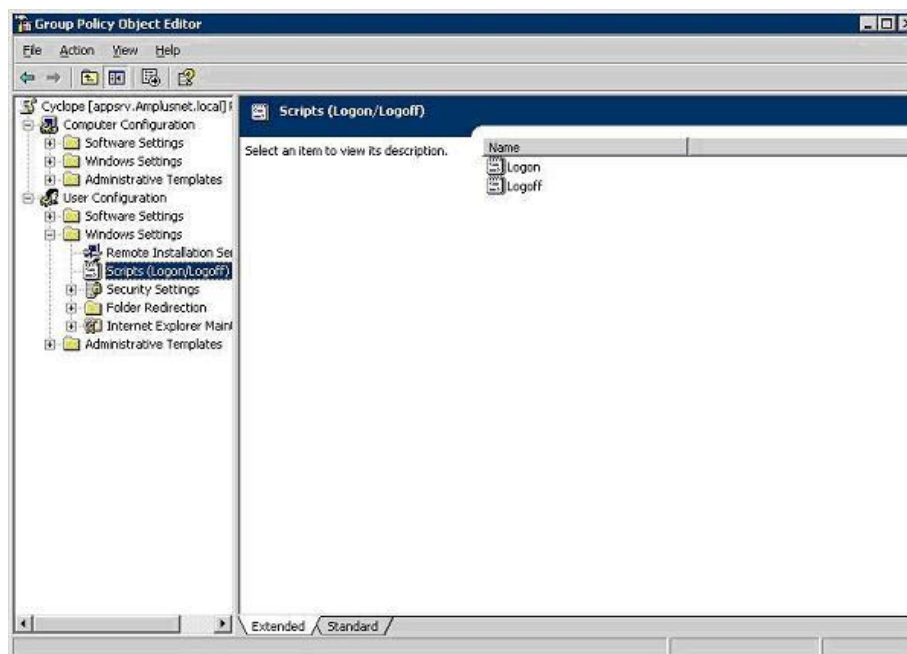


- In the **Group Policy** Tab a new **GPO** may be created for the **OU** or an existing unlinked **GPO** may be linked to the current **OU**

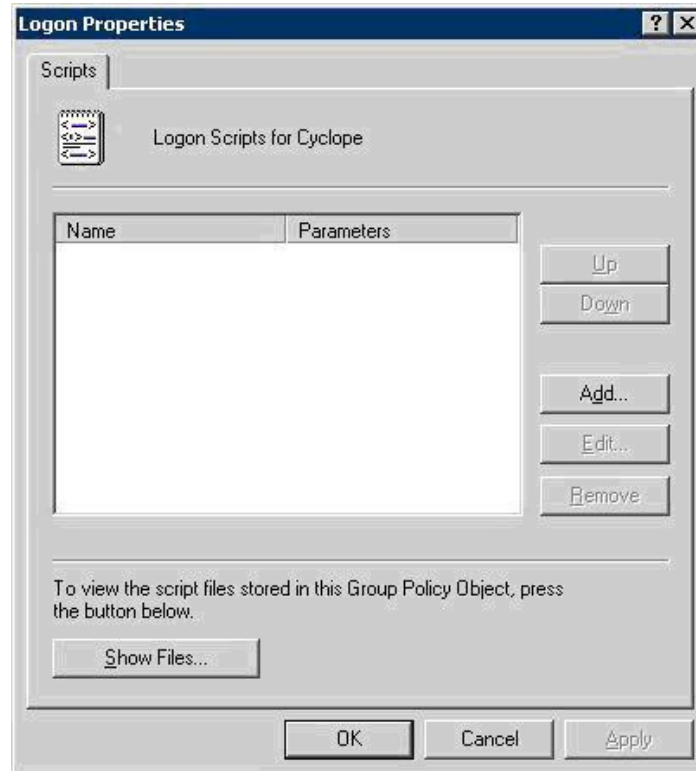
2. Click **Edit** to edit the **GPO** Properties or open a **MMC** with the wanted **GPO** snap-in

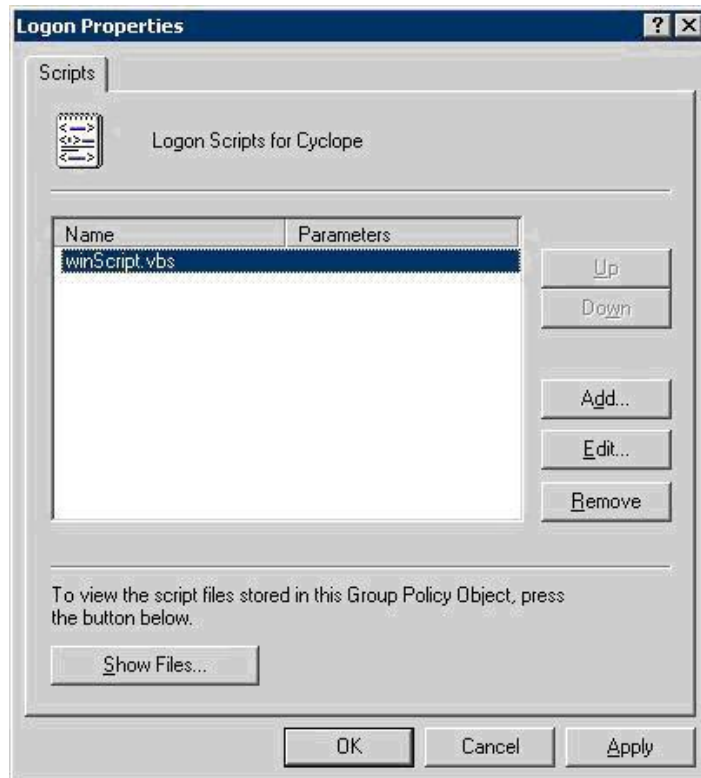


3. Under **User Configuration**, expand **Windows Settings**, click **Scripts (Logon / Logoff)** and double click **Logon**.



4. Click **Add** and browse to a script (from a share or from the local computer) that starts an application. The script is written in **Windows Script Host**.





Each time a user that has the **GPO** – linked, logs on, the application is started.

Example of the script: **winScript.vbs**

```
Set WshShell = WScript.CreateObject("WScript.Shell")
```

```
WshShell.Run rundll32.exe \\Share\CIFPNetClient.dll rdl -  
cfg=[srv=10.0.0.1&srvport=8585]"
```

Example of the script: **winScript.vbs**

```
Dim WshShell
```

```
Dim value
```

```
Set WshShell = WScript.CreateObject ("WScript.shell")
```

```
value = "rundll32.exe \\10.0.0.1:8585\Client\CIFPNetClient.dll rdl -  
cfg=[srv=10.0.0.1&srvport=8585]"
```

```
WshShell.RegWrite "HKCU\Software\Microsoft\Windows\CurrentVersion\Run\cy",  
value
```

Cyclope Internet Filtering Proxy Client Uninstall

In order to uninstall the client application please run **CIFPClientUninstall.exe** (located in your **Windows** folder). You will be prompted with a message requesting a password.



This security check prevents unauthorized users from disabling the client application. The requested password is **cyclopeadmin123x**.

Press **Uninstall Now Button** in order to complete the process.



3. Support



E-mail Support

For any technical related question please contact our technical support team:
support@amplusnet.com

For any sales related questions please contact our sales support team:
sales@amplusnet.com



Phone Support

Our phone support lines (available during working days):
+40 365 401269