

Printer monitoring

Cyclope Print Management Software

- Installation Guide -

Version 4.0

**for Windows® 2000/XP/Vista
and Windows® Server 2003/2008**

Cyclope-Series, 2010

Table of Contents

1.	Introduction	3
2.	Requirements and Recommendations.....	4
3.	Cyclope Print Management Software Installation	5
3.2.	Previous version update	5
3.3.	Import old databases.....	5
3.4.	Firewall settings	6
4.	How to enable viewing print jobs for some printers	6
4.1.	HP DesignJet 5500, HP DesignJet 110 and other HP plotters	6
4.2.	HP network printers.....	7
4.3.	HP LaserJet 1000, 1005, 1010, 1020, HP Color LaserJet 1160, 2600.....	8
4.4.	Print jobs from Corel Draw	8
5.	Customizing Cyclope Print Management Software preferences	9
6.	Licensing	16
7.	Support	16

1.Introduction

Cyclope Print Management Software is an easy-to-use program designed to record a printer's usage statistics and to simplify the management of network printers. Using Cyclope Print Management Software you can save the print jobs content. With Cyclope Print Management Software you can limit the number of pages a user can print by setting quotas for the number of pages printed or for the print cost. After a user exceeds a specified quota, access to the printer is denied.

Cyclope Print Management Software gives you all necessary information about every print job:

- user name;
- computer name;
- document name;
- time & date of printing;
- number of pages;
- number of copies;
- document size;
- priority;
- paper size;
- paper orientation;
- color of printing (colored or black and white);
- whether it was a duplex printing or not;
- print quality;
- print job cost.

Using Cyclope Print Management Software you can:

- Copy/move print jobs from printer to printer;
- Preview contents of print job before sending to printer;
- Pause or lock all new print jobs.
- View the printed jobs content;
- Notify users when quotas are exceeded;
- Control all the printers simultaneously;
- Sort printers by a desired parameter (e.g. when sorting by the number of jobs currently running, you can see the most overloaded printers).

Cyclope Print Management Software can determine and store print jobs created under various operating systems: DOS, Windows 3.11/95/98/ME Windows NT/2000/XP/Vista, Windows Server 2003/2008, Macintosh, Linux, Solaris and other Unix versions. Cyclope Print Management Software features an improved print jobs manager. All basic operations and print jobs can be handled directly from Cyclope Print Management Software. The software also features remote management of printers installed on other computers. You can also remotely install and configure Cyclope Print Management Software to store print jobs on remote computers.

All the information can be collected for preview in any number of ways. Exporting the data into files of various formats is also supported.

Cyclope Print Management Software works as service. This means it automatically starts when the computer boots up and all print jobs will be recorded, even if a user does not log in to the system.

Thus, using Cyclope Print Management Software, you can make routine print job management easy, cut down your printing expenses and better predict the need for printing materials for the whole network.

2.Requirements and Recommendations

2.1. Software Requirements and Recommendations:

Cyclope Printer Monitor SERVER

Required for Install:

- Windows 2000/XP/2003/Vista/2008

Cyclope Printer Monitor CLIENT

Required for Install:

- Windows 2000/XP/2003/Vista/2008

2.2. Hardware Requirements and Recommendations:

Cyclope Print Management Software service

Required for Install:

- 10MB free HD Space

Recommended:

- 512MB RAM
- 500MHz or above x86-compatibility computer

Cyclope Print Management Software client

Required for Install:

- 10MB free HD Space

Cyclope Print Management Software database

Recommended:

- 50MB or above free HD Space with disabled storing the content of print jobs
- 25GB or above free HD Space with enabled storing the content of print jobs

3.Cyclope Print Management Software Installation

Please read this before installation

Cyclope Print Management Software is designed to control printers in a Microsoft Windows network. It is presumed that all the print jobs are sent from workstations to a Windows server (or a workstation which serves as a print server) and not directly from a workstation to network printers.

You will need administrator privileges to install Cyclope Print Management Software to a local workstation or print server.

3.1. Installing Cyclope Print Management Software

Cyclope Print Management Software consists of two components: client and server. You can install them both, or only a client for remote management.

Before installing Cyclope Print Management Software, make sure you are installing the latest version of the software. You can download the latest version here: <http://www.cyclope-series.com>. Run setup.exe and follow the instructions.

When installing Cyclope Print Management Software, you may have to reboot the computer if the files which should be replaced are currently in use. After system reboot, all the necessary files are updated.

If the installation wizard did not ask for a system reboot, you can start using Cyclope Print Management Software immediately.

Server component

The Server component is the Cyclope Print Management Software, service which should be installed to a print server to allow the following:

1. Print job recording;
2. Control of quotas;
3. User authentication;
4. User notification of quota status;
5. Print job pausing and their locking.

Client component

The Cyclope Print Management Software client component can be installed to any server or workstation and can remotely manage any print server on which the Cyclope Print Management Software service is installed.

3.2. Previous version update

You have to un-install previous version of Cyclope Print Management Software before installing a new version. If you want to keep print job history, do not delete the old database when un-installing the software.

The new database format is incompatible with the Cyclope Print Management Software 3.x database format.

3.3. Import old databases

Due format changes it is impossible to import the old database. This is a legacy feature that was present in the previous versions.

3.4. Firewall settings

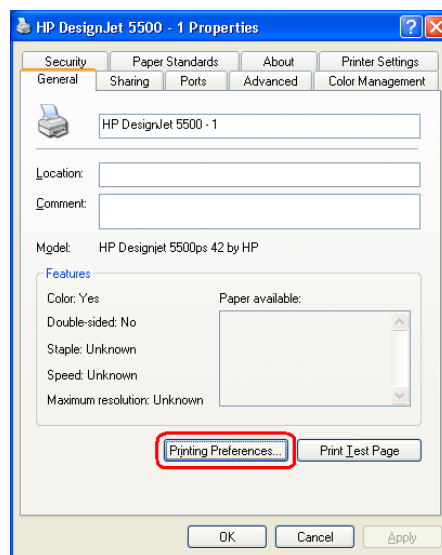
If your Windows Firewall is ON than you need to enable exception for "File and Printer Sharing".

For other Firewalls you need to enable exception for TCP Port 139.

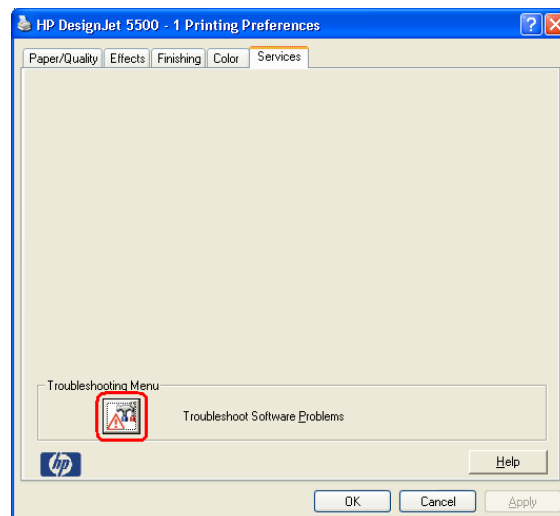
4. How to enable viewing print jobs for some printers

4.1. HP DesignJet 5500, HP DesignJet 110 and other HP plotters

1. If you have HP plotter, open its properties and click the "Printing Preferences..." button on "General" tab:



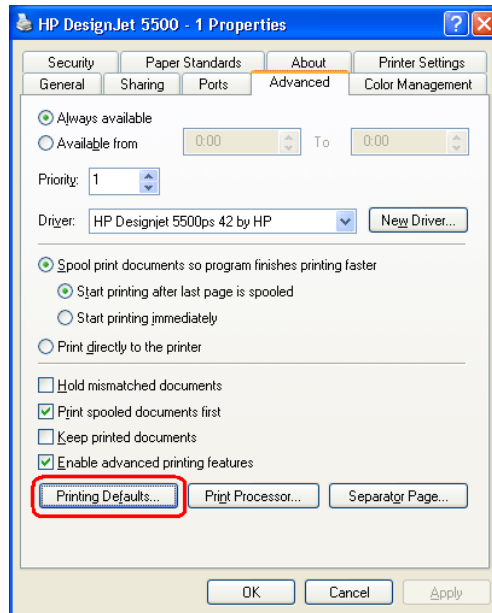
2. On "Printing Preferences" window switch to "Services" tab and click the "Troubleshoot Software Problems" button:



3. Disable "Enable SpoolSmart" option, click the OK button and click the OK button on "Printing Preferences" windows (previous step).



4. Switch to "Advanced" tab on printer properties window, click the "Printing Defaults..." button and execute again steps 2 and 3.

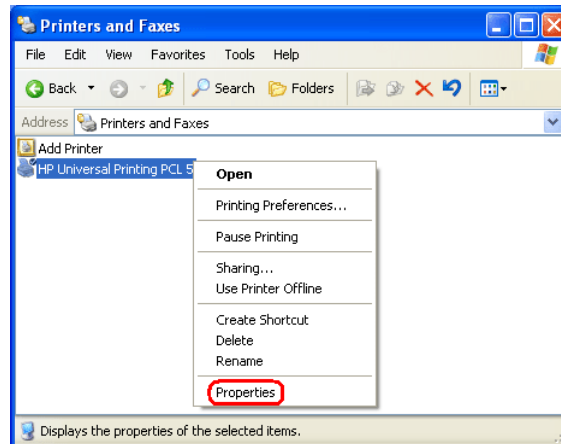


5. Now you can use this printer for printing and view the contents of its print jobs.

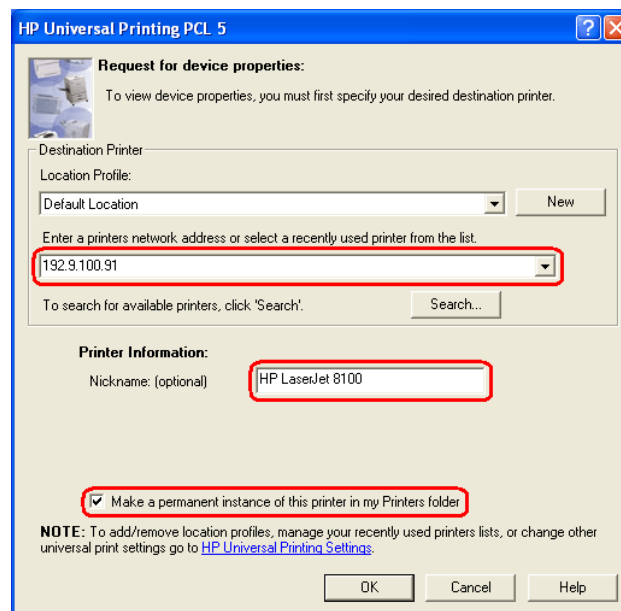
4.2. HP network printers

1. If you have HP network printers, go to <http://hp.com>, click the link "Software & Driver Downloads" and find your printer model. "HP Universal Print Driver for Windows - PCL 5" can be downloaded almost for all printers.
2. For example, let us see how to configure the printer "HP LaserJet 8100". Download and install the driver for this printer (its file name is updpcl5win2kxp2003-en.exe).

After you install this driver, you will have a printer named "HP Universal Printing PCL 5". Open its properties:



3. Use the "HP Universal Printing PCL 5" dialog box to enter the IP address of your printer (192.9.100.91), Printer name (HP LaserJet 8100) and enable the "Make a permanent instance of this printer in my Printers folder" option. Click the OK button after that.



4. Now you can use this printer (HP LaserJet 8100) for printing and view the contents of its print jobs.

4.3. HP LaserJet 1000, 1005, 1010, 1020, HP Color LaserJet 1160, 2600

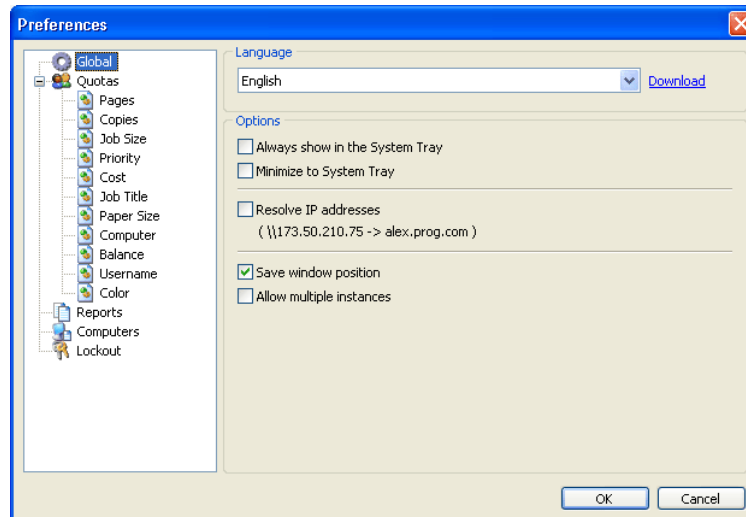
Using current versions of the Cyclope Print Management Software and Remote Queue Manager you can't enable preview for this printers.

4.4. Print jobs from Corel Draw

If you can preview all print jobs for your HP printer but you can't preview print jobs from Corel Draw only, it is possible that you use PostScript printer drivers. You can try to download and install non PostScript drivers (for example PCL) for your printer.

5. Customizing Cyclope Print Management Software preferences

Choose the "Settings"->"Preferences" menu item to customize Cyclope Print Management Software preferences.



Language and Interface Options

On the "Global" tab you can set the program interface language.

The options for working with a system tray are: Minimize Cyclope Print Management Software to System Tray and Always Show Cyclope Print Management Software in the System Tray. You can set the option of displaying DNS names of computers instead of their IP addresses. You can also save window position on program exit and allow multiple instances of the program.

Quotas Options

You can use the "Quotas" page specify quota options. You can set quotas either by the number of printed pages or by the cost of printing.

Page Count Quotas

You can use the "Pages" page to specify what the server should do if the number of pages in a print job exceeds the restrictions for printer, user or group. Here you can choose if such print jobs should be paused or removed from the queue.

Also you can specify a message to the user who sent such a print job telling him that his print job is either paused or deleted.

Copies Quotas

You can use the "Copies" page to specify what the server should do if the number of copies in a print job exceeds the restrictions for printer, user or group. Here you can choose if such print jobs should be paused or removed from the queue.

Also you can specify a message to the user who sent such a print job telling him that his print job is either paused or deleted.

Job Size Quotas

You can use the "Job Size" page to specify what the server should do if the size of a print job exceeds the restrictions for printer, user or group. Here you can choose if such print jobs should be paused or removed from the queue.

Also you can specify a message to the user who sent such a print job telling him that his print job is either paused or deleted.

Priority Quotas

You can use the "Priority" page to specify what the server should do if the priority of a print job exceeds the restrictions for printer, user or group. Here you can choose if such print jobs should be paused or removed from the queue.

Also you can specify a message to the user who sent such a print job telling him that his print job is either paused or deleted.

Copies options

When the user attempts to print a file which exceeds the maximum number of copies:

☒ Pause the print job
☐ Delete the print job

☒ Write message to log file
☒ Send pop-up message to the user

This job exceeds the maximum allowable copies for a single job. Print Job Cancelled. Please contact your administrator.

Job Size options

When the user attempts to print a file which exceeds the maximum size:

☒ Pause the print job
☐ Delete the print job

☒ Write message to log file
☒ Send pop-up message to the user

This job exceeds file size limit. Print Job Cancelled. Please contact your administrator.

Priority options

When the user attempts to print a file which exceeds the maximum priority:

☒ Pause the print job
☐ Delete the print job

☒ Write message to log file
☒ Send pop-up message to the user

This job exceeds the maximum allowable priority. Print Job Cancelled. Please contact your administrator.

Cost Quotas

You can use the "Cost" page to specify what the server should do if the cost of a print job exceeds the restrictions for printer, user or group. Here you can choose if such print jobs should be paused or removed from the queue.

Also you can specify a message to the user who sent such a print job telling him that his print job is either paused or deleted.

Job Title Quotas

You can use the "Job Title" page to specify what the server should do if the title of a print job does not fit within the restrictions for printer, user or group. Here you can choose if such print jobs should be paused or removed from the queue.

Also you can specify a message to the user who sent such a print job telling him that his print job is either paused or deleted.

Paper Size Quotas

You can use the "Paper Size" page to specify what the server should do if the paper size of a print job does not fit within the restrictions for printer, user or group. Here you can choose if such print jobs should be paused or removed from the queue.

Also you can specify a message to the user who sent such a print job telling him that his print job is either paused or deleted.

Cost options

When the user attempts to print a file which exceeds the maximum cost:

☒ Pause the print job
☐ Delete the print job

☒ Write message to log file
☒ Send pop-up message to the user

This job exceeds the maximum allowable cost. Print Job Cancelled. Please contact your administrator.

Job Title options

When the user attempts to print a file which has been restricted by title:

☒ Pause the print job
☐ Delete the print job

☒ Write message to log file
☒ Send pop-up message to the user

Printing documents with this title is not allowed. Print Job Cancelled. Please contact your administrator.

Paper Size options

When the user attempts to print a file which has been restricted by paper size:

☒ Pause the print job
☐ Delete the print job

☒ Write message to log file
☒ Send pop-up message to the user

Printing documents with this paper size is not allowed. Print Job Cancelled. Please contact your administrator.

Computer Quotas

You can use the "Computer" page to specify what the server should do if the computer of a print job does not fit within the restrictions for printer, user or group. Here you can choose if such print jobs should be paused or removed from the queue.

Also you can specify a message to the user who sent such a print job telling him that his print job is either paused or deleted.

Balance Quotas

You can use the "Balance" page to specify what the server should do if a print job exceeds the balance of the user who sent it. Here you can choose if such print jobs should be paused or removed from the queue. You can specify message for user if balance exceeds selected percent of limit.

Also you can specify a message to the user who sent such a print job telling him that his print job is either paused or deleted.

Username Quotas

You can use the "Username" page to specify what the server should do if the name of the user who sent a print job is absent in the database of the program. Here you can choose if such print jobs should be paused or removed from the queue. You can allow such print jobs to be printed. In this case the new user will be added to the database of the program and the default quotas will be applied to him.

Also you can specify a message to the user who sent such a print job telling him that his print job is either paused or deleted.

Computer options

When the user attempts to print a file which has been restricted by computer name:

☒ Pause the print job
☐ Delete the print job

☒ Write message to log file
☒ Send pop-up message to the user

Printing documents from this computer is not allowed. Print Job Cancelled. Please contact your administrator.

Balance options

When the Balance (pages or money) in the users Account is exceeded:

☒ Pause the print job
☐ Delete the print job

☒ Inform user if balance exceeds % of limit

Your balance is getting low. Please contact your administrator.

☒ Write message to log file
☒ Send pop-up message to the user

Insufficient balance in account for this job. Print Job Cancelled. Please contact your administrator.

Username options

When a print job is submitted with no username, or an unknown username:

☐ Pause the print job
☐ Delete the print job
☒ Allow the job to print

☒ Write message to log file
☒ Send pop-up message to the user

You are not authorized to print on this printer. Print Job Cancelled. Please contact your administrator.

Color Quotas

You can use the "Color" page to specify what the server should do if the color of a print job does not fit within the restrictions for printer, user or group. Here you can choose if such print jobs should be paused or removed from the queue.

Also you can specify a message to the user who sent such a print job telling him that his print job is either paused or deleted.

Reports Options

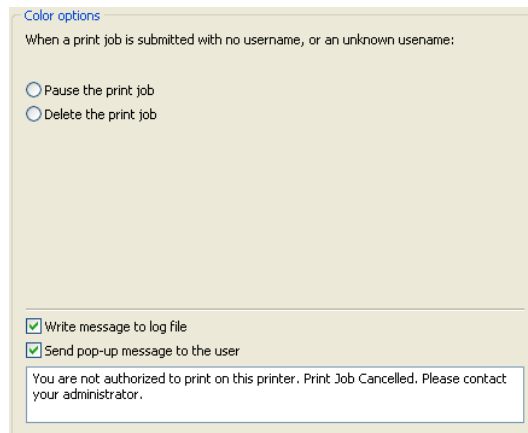
You can use the "Reports" page to customize the parameters of working with your report file. It is possible to change its path if there isn't enough space on the default drive.

Note: You can change path for local connection only!

You can also set some additional options of report file processing, such as maximum size and actions performed when maximum report size is reached. When the report reaches the maximum size, you can overwrite records as needed, overwrite records older than a certain number of days or perform no actions at all (in this case the report size will increase automatically).

Computer list for remote connecting

You can use the "Computers" page to specify the drop-down list of computers for connecting to other computers. Here you can add new computers, remove those you do not need and change their order.



Color options

When a print job is submitted with no username, or an unknown username:

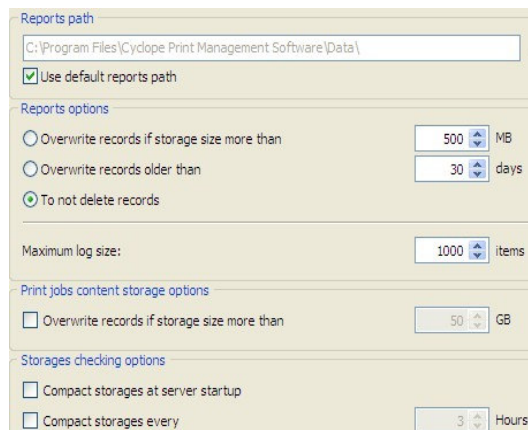
☐ Pause the print job

☐ Delete the print job

☒ Write message to log file

☒ Send pop-up message to the user

You are not authorized to print on this printer. Print Job Cancelled. Please contact your administrator.



Reports path

C:\Program Files\Cyclope Print Management Software\Data\

☒ Use default reports path

Reports options

☐ Overwrite records if storage size more than 500 MB

☐ Overwrite records older than 30 days

☒ To not delete records

Maximum log size: 1000 items

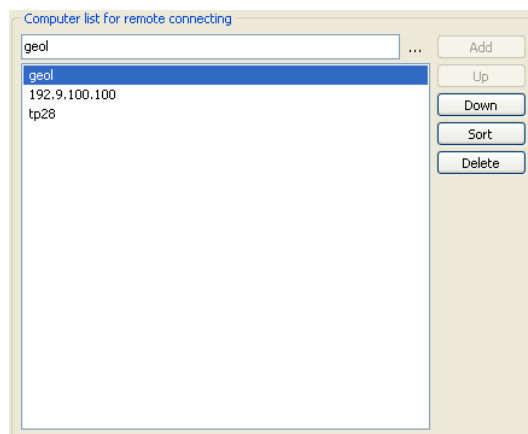
Print jobs content storage options

☐ Overwrite records if storage size more than 50 GB

Storages checking options

☐ Compact storages at server startup

☐ Compact storages every 3 Hours



Computer list for remote connecting

geol

geol

192.9.100.100

tp28

Add

Up

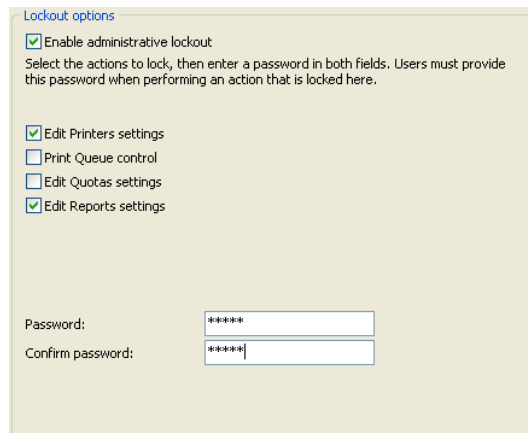
Down

Sort

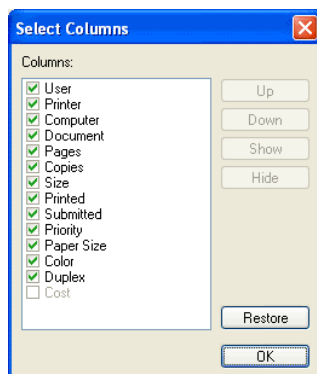
Delete

Lockout Options

On the "Lockout" tab you can enable the option of locking any modifications of Cyclope Print Management Software options. You can: lock changing the Jobs History option for printers, lock changing the quotas and lock changing the report file options. After you enable the lockout, you'll have to enter password to modify the locked options.



On every Cyclope Print Management Software tab you can arrange the data by any column and hide unneeded columns by right-clicking the column header and selecting the "Select Columns..." menu item.



6.Licensing

Cyclope Print Management Software licensing is based on the number of users / computers who are using the printers in the network. So a license code will be generated based on the number of users using the network and local printers.

7.Support



E-mail Support

For any technical related question please contact our technical support team:

support@cyclope-series.com

For any sales related questions please contact our sales support team:

sales@cyclope-series.com



Phone Support

Our phone support lines (available during working days):

+40 365 401269